

Dear Parent/Guardian's

We want to take a moment to explain the crucial importance of regular school attendance for your child's education and share some resources to support the family in maintaining a high attendance figure.

**You can check your child's attendance figure by using the My Ed or Show My Homework apps.**

Attending school regularly is not just a legal requirement; it is an essential part of your child's academic and personal development. All students are expected to be in school above 96% or all 190 school days.

As proven by our most recent GCSE and A Level results, the link at Drayton Manor High School between high levels of attendance and academic progress is clear. Year 11 students who attended school over 95% last year were, on average, in the top 8% of students nationally for progress in their GCSEs.

Here are some further reasons why school attendance is so important

1. **Academic Success:** Regular attendance ensures that your child does not miss out on important lessons, classroom discussions, and academic opportunities. This, in turn, helps them perform better in school
2. **Social Development:** School is not just about academics; as per our school values, children at Drayton Manor High School develop strong character and civic virtue. Consistent attendance is vital for developing these values
3. **Habit Formation:** Attending school regularly provides a strong work ethic and the discipline needed for success in later stages of life. It teaches your child the importance of responsibility and punctuality which is vital beyond life at Drayton Manor High School
4. **Teacher-Student Interaction:** Regular attendance allows teachers to provide individualized support and guidance to your child, addressing their unique needs and helping them thrive
5. **Preparation for the Future:** Your child's educational journey is building the foundation for their future. Consistent attendance sets the stage for higher education and career opportunities

We understand that occasional illnesses and family emergencies may result in absences. In such cases, please inform the school as soon as possible through My Ed, so we can work together to ensure your child is back in school at the earliest opportunity.

You will see attached helpful infographics that we have developed to support conversations around attendance and punctuality at home. Please use these to ensure regular attendance.

If you encounter any challenges that affect attendance, please do not hesitate to reach out to your child's Head of Year for support and guidance. Your cooperation and active involvement in your child's education is greatly appreciated.

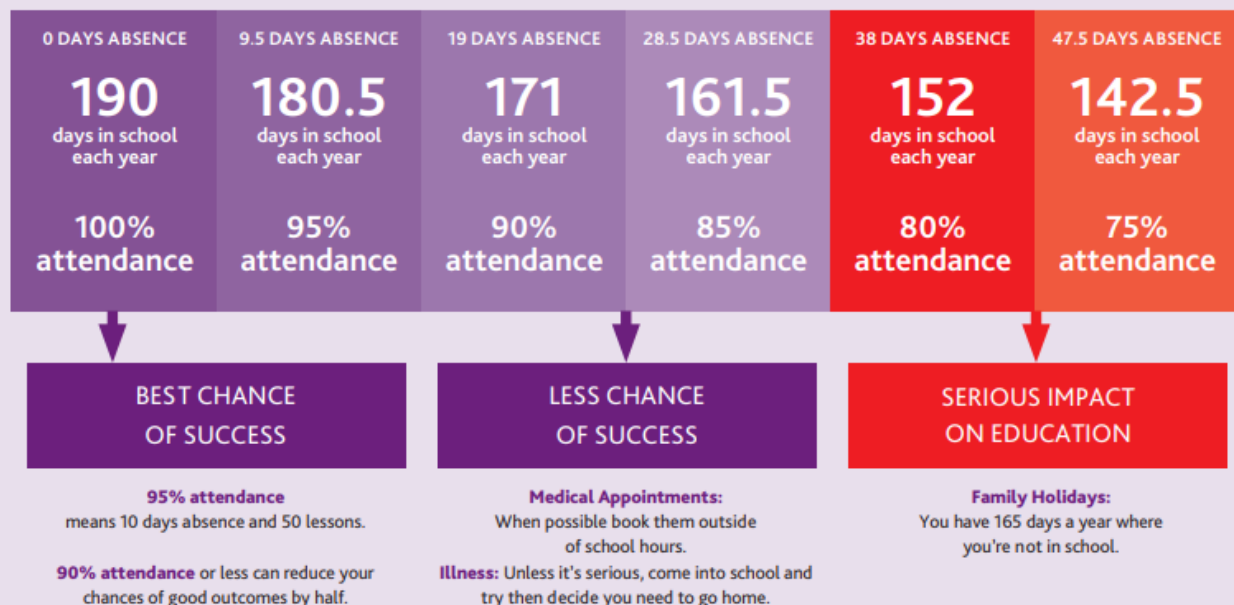
Thank you for your understanding and commitment to your child's education.

Sincerely,

Drayton Manor High School Attendance Team



# ATTENDANCE MATTERS



# PUNCTUALITY MATTERS



Average learning time per day is 5 hours. If you are 15 minutes late each day  
you will have missed 2 full weeks of school in one year!



AMBITION - CHARACTER - CIVIC VIRTUE

