



DRAYTON MANOR HIGH SCHOOL
EdExcel Art & Design

Assessment Objective Focus: AO1 & AO2

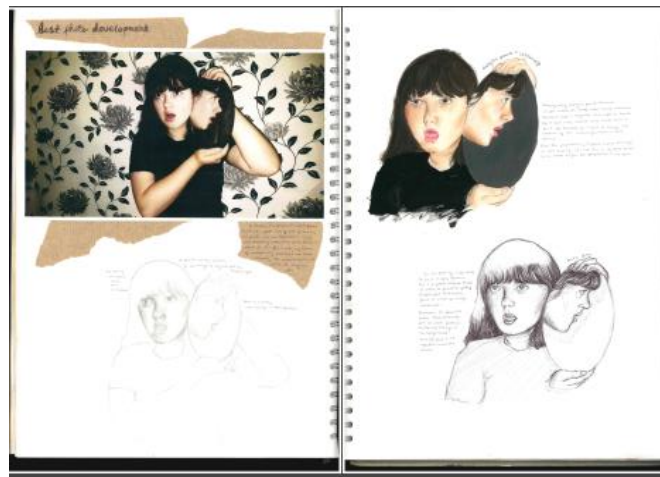
W/B 22.03.2021

Time: 2hrs (in lesson time)

Task: Observational Study Investigation

Brief:

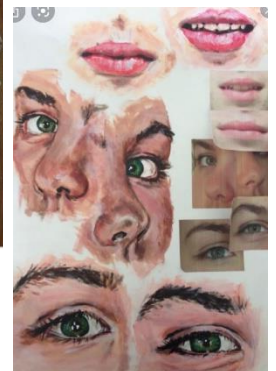
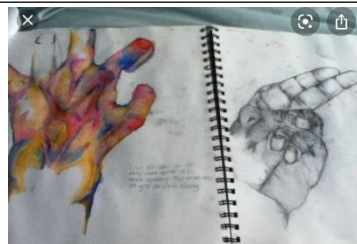
You have been exploring & investigating the theme of 'Memories' in your journal and have branched into your own area of investigation (sub-theme).



This assessment focus is on AO2 & AO3:

AO2: Refine work by exploring ideas, selecting and experimenting with appropriate media, materials techniques and processes **(18m)**

AO3: Record ideas, observations and insights relevant to intentions as work progresses **(18m)**





DRAYTON MANOR HIGH SCHOOL
EdExcel Art & Design

Assessment Objective Focus: AO1 & AO2
W/B 22.03.2021

Materials:

- Colouring pencil
- Charcoal
- Colouring pencil
- Biro
- Other (appropriate media)

Preparatory studies

Preparatory studies will respond to your chosen investigation theme and may include sketchbook, notebooks, worksheets, designs, large-scale rough studies, samples, swatches, test pieces, maquettes, and digital material...anything that fully shows fully your progress towards your outcomes.

Your preparatory studies should show evidence of

- your development and control and control of visual literacy and the formal elements (tone, texture, colour, line, form and structure)
- an exploration of techniques and media
- investigations showing engagement with appropriate primary and secondary
- the development of your thoughts, decisions and ideas based on the theme
- critical review and reflection

Period of sustained focus

During the 2 hour period of sustained focus you will produce your 'Observational Study Investigations' responding to your theme, based on your preparatory studies.

This period of sustained focus may take place over more than one session.

Notes:

Observational drawing based on own photos 1-2 pages

- Drawing based on the own photos. This shows ability to copy from a source.
- Start in lead and then explore some different media.
- You can do small studies eg close ups of certain areas.
- Do one as a minimum and make them the highest quality you can.
- The more drawing the better

